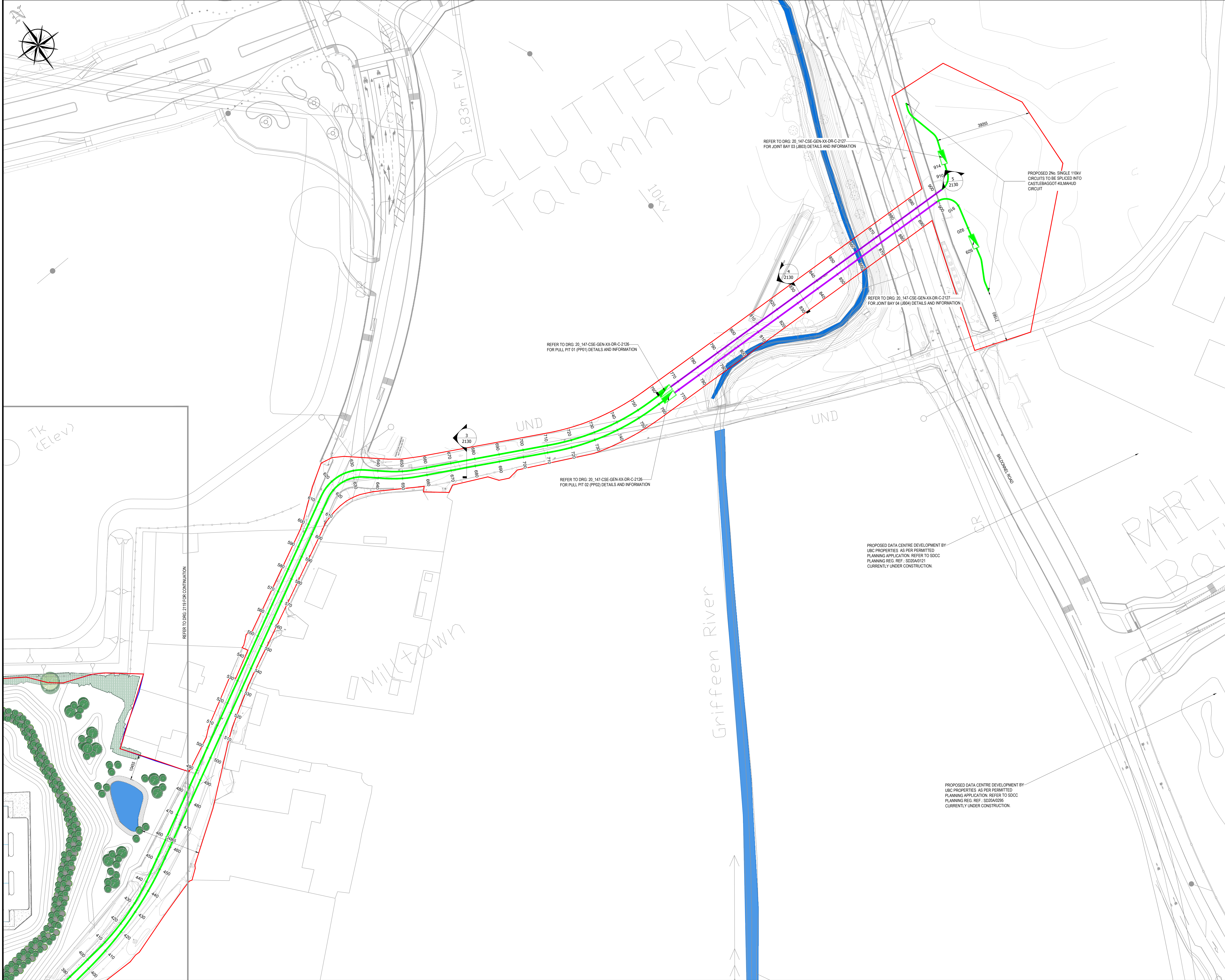


**KEYPLAN**  
N.T.S

- LEGEND:**
- PLANNING BOUNDARY
  - PROPERTY BOUNDARY
  - PROPOSED 110KV GRID CONNECTION
  - PROPOSED HDD (HORIZONTAL DIRECTIONAL DRILL)
  - PROPOSED HV CONDUITS
  - EXISTING GRIFFEEN RIVER



Tk (Elev)

1.83m FW

10KV

UND

UND

Griffieen River

BALDORNE ROAD

RAPT  
BO

REFER TO DRG. 2119 FOR CONTINUATION

REFER TO DRG. 20\_147-CSE-GEN-XX-DR-C-2126 FOR PULL PIT 01 (PP01) DETAILS AND INFORMATION

REFER TO DRG. 20\_147-CSE-GEN-XX-DR-C-2127 FOR JOINT BAY 03 (JB03) DETAILS AND INFORMATION

REFER TO DRG. 20\_147-CSE-GEN-XX-DR-C-2127 FOR JOINT BAY 04 (JB04) DETAILS AND INFORMATION

REFER TO DRG. 20\_147-CSE-GEN-XX-DR-C-2126 FOR PULL PIT 02 (PP02) DETAILS AND INFORMATION

PROPOSED DATA CENTRE DEVELOPMENT BY UBC PROPERTIES AS PER PERMITTED PLANNING APPLICATION. REFER TO SDCC PLANNING REG. REF. S02040221 CURRENTLY UNDER CONSTRUCTION.

PROPOSED DATA CENTRE DEVELOPMENT BY UBC PROPERTIES AS PER PERMITTED PLANNING APPLICATION. REFER TO SDCC PLANNING REG. REF. S02040221 CURRENTLY UNDER CONSTRUCTION.

P08	ISSUE FOR PLANNING	DW	LP	15.03.21
P07	FOR INFORMATION	DW	LP	15.03.21
P06	FOR INFORMATION	DW	LP	12.03.21
P05	FOR INFORMATION	DW	LP	10.03.21
P04	FOR INFORMATION	DW	LP	10.03.21
P03	FOR INFORMATION	DW	LP	04.03.21
P02	FOR INFORMATION	DW	LP	23.02.21
P01	FOR INFORMATION	DW	LP	15.02.21

**Clifton Scannell Emerson Associates Limited**  
Consulting Engineers,  
Merrion Square (18 Floor),  
Bakers Point, Parnley Road,  
Dun Laoghaire, Co. Dublin,  
Ireland. D08 R9P2

T: +353 1 288 5008  
F: +353 1 283 3466  
E: info@csea.ie  
W: www.csea.ie

Client		SERVICES DUE DILIGENCE	
Project		SITE R120	
OVERALL PROPOSED GRID ROUTE PLAN SHEET 02			
Drawn By	DW	Date	MAR 2021
Checked By	RG	Scale	1:500 @ A0
Project Code	20_147 - CSE - GEN - XX - DR - C - 2120	Originator	
Status Code	S2	For Information	
Revision	P08	Project Status	PLANNING